

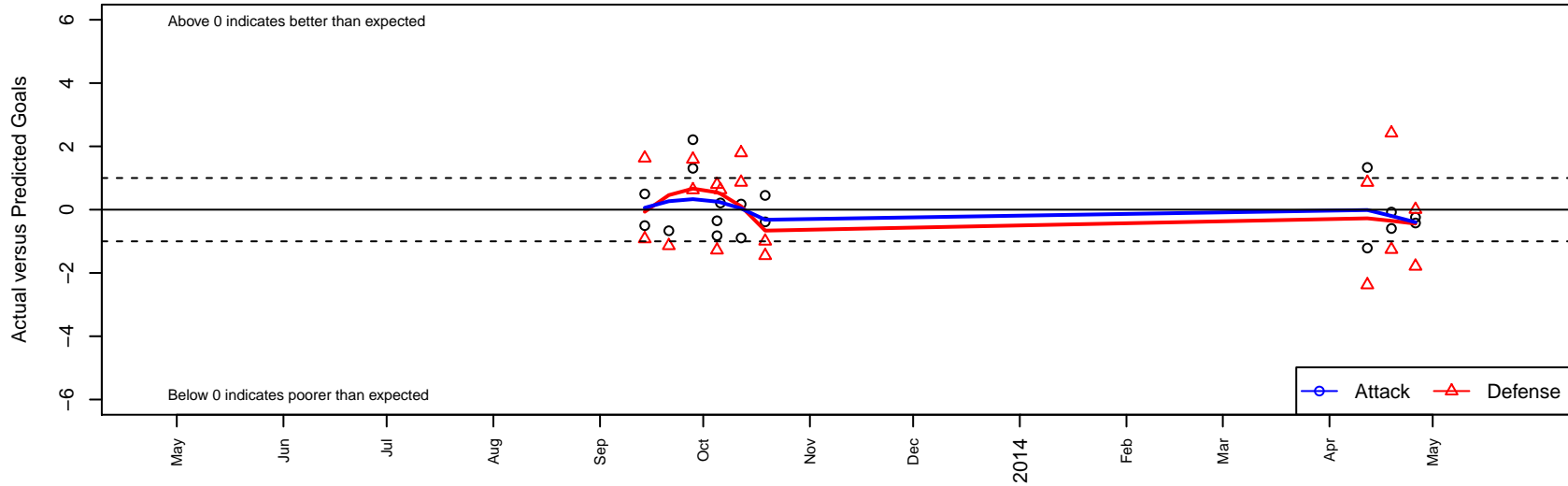
Sawtooth United FC G02

, ID
 G02 total strength=-132
 attack=0.06 defense=0.03
 fall league = Idaho D3 Bracket B East U11, Idal
 alt names used:
 SAWTOOTH UNITED GU11
 SAWTOOTH UNITED GU11 (ID)
 SAWTOOTH UNITED FC

Venues played:
 Idaho D3 Bracket B East U11
 Idaho D3 Bracket B West U11
 GEM State Challenge U11G Silver East U11
 Spr Idaho D3 West U11



Sawtooth United FC G02
 Dots are actual minus expected GF (blue circles) and GA (red triangles).
 Blue line is smoothed change in attack strength. Red is smoothed change in defense strength.



	date	home		away		venue	pred.home	pred.away
3771	2014-04-26	Sawtooth United FC G02	1	Nationals West Crushers G02	2	Spr Idaho D3 West U11	1.42	2.006
3772	2014-04-26	Sawtooth United FC G02	1	Meridian United FC Spain G02	6	Spr Idaho D3 West U11	1.24	4.210
3746	2014-04-19	Boise Nationals White G02	6	Sawtooth United FC G02	0	Spr Idaho D3 West U11	8.42	0.077
3747	2014-04-19	FC Nova Grey G02	6	Sawtooth United FC G02	0	Spr Idaho D3 West U11	4.74	0.595
3693	2014-04-12	Sawtooth United FC G02	2	Real Middleton Madrid G02	4	Spr Idaho D3 West U11	0.67	4.861
3694	2014-04-12	Idaho Rush Black G02	6	Sawtooth United FC G02	0	Spr Idaho D3 West U11	3.62	1.214
2231	2013-10-19	Sawtooth United FC G02	1	Idaho Arsenal United Aftershock G02	8	Idaho D3 Bracket B West U11	0.55	7.004
2232	2013-10-19	FC Nova Red G02	5	Sawtooth United FC G02	1	Idaho D3 Bracket B West U11	3.55	1.386
2072	2013-10-12	Idaho Torrent G02	7	Sawtooth United FC G02	1	Idaho D3 Bracket B East U11	8.79	0.823
2074	2013-10-12	Sawtooth United FC G02	1	Meridian United FC Portugal G02	1	Idaho D3 Bracket B East U11	1.89	1.864
1986	2013-10-06	Sawtooth United FC G02	1	Boise Nationals Blue G02	7	GEM State Challenge U11G Silver East U11	0.79	7.626
1873	2013-10-05	Sawtooth United FC G02	0	Idaho Torrent G02	8	GEM State Challenge U11G Silver East U11	0.82	8.795
1875	2013-10-05	Sawtooth United FC G02	0	PVSC United G02	3	GEM State Challenge U11G Silver East U11	0.35	1.722
1717	2013-09-28	Boise Nationals Blue G02	7	Sawtooth United FC G02	3	Idaho D3 Bracket B East U11	7.63	0.789
1718	2013-09-28	Nationals West G02	4	Sawtooth United FC G02	2	Idaho D3 Bracket B East U11	5.59	0.692
1562	2013-09-21	Sawtooth United FC G02	0	Real Middleton Madrid G02	6	Idaho D3 Bracket B West U11	0.67	4.861
1390	2013-09-14	Sawtooth United FC G02	1	Idaho Crossfire Inferno G02	7	Idaho D3 Bracket B East U11	0.50	6.077
1392	2013-09-14	Sawtooth United FC G02	0	Idaho Rush White G02	6	Idaho D3 Bracket B East U11	0.50	7.629